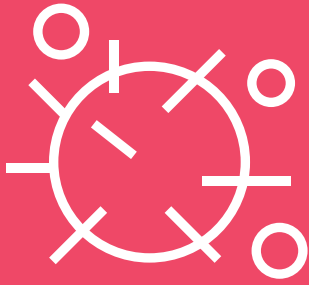
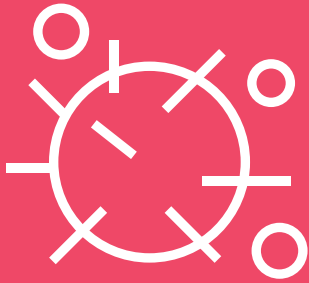


WASH YOUR HANDS FOR 20 SECONDS AND SPOT THE DIFFERENCE IN EACH ROW

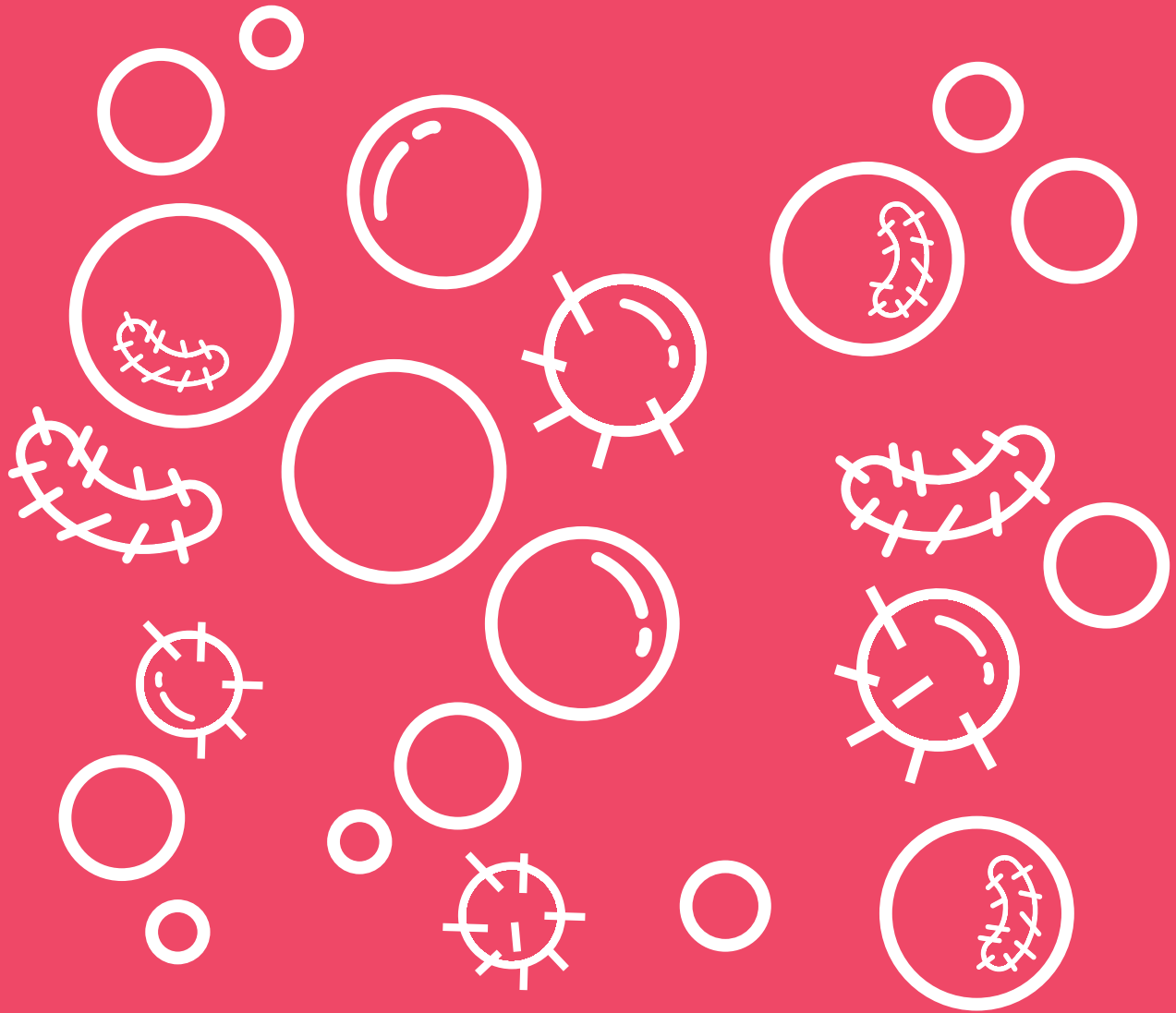


ANSWER KEY

WASH YOUR HANDS FOR 20 SECONDS AND SPOT THE DIFFERENCE IN EACH ROW

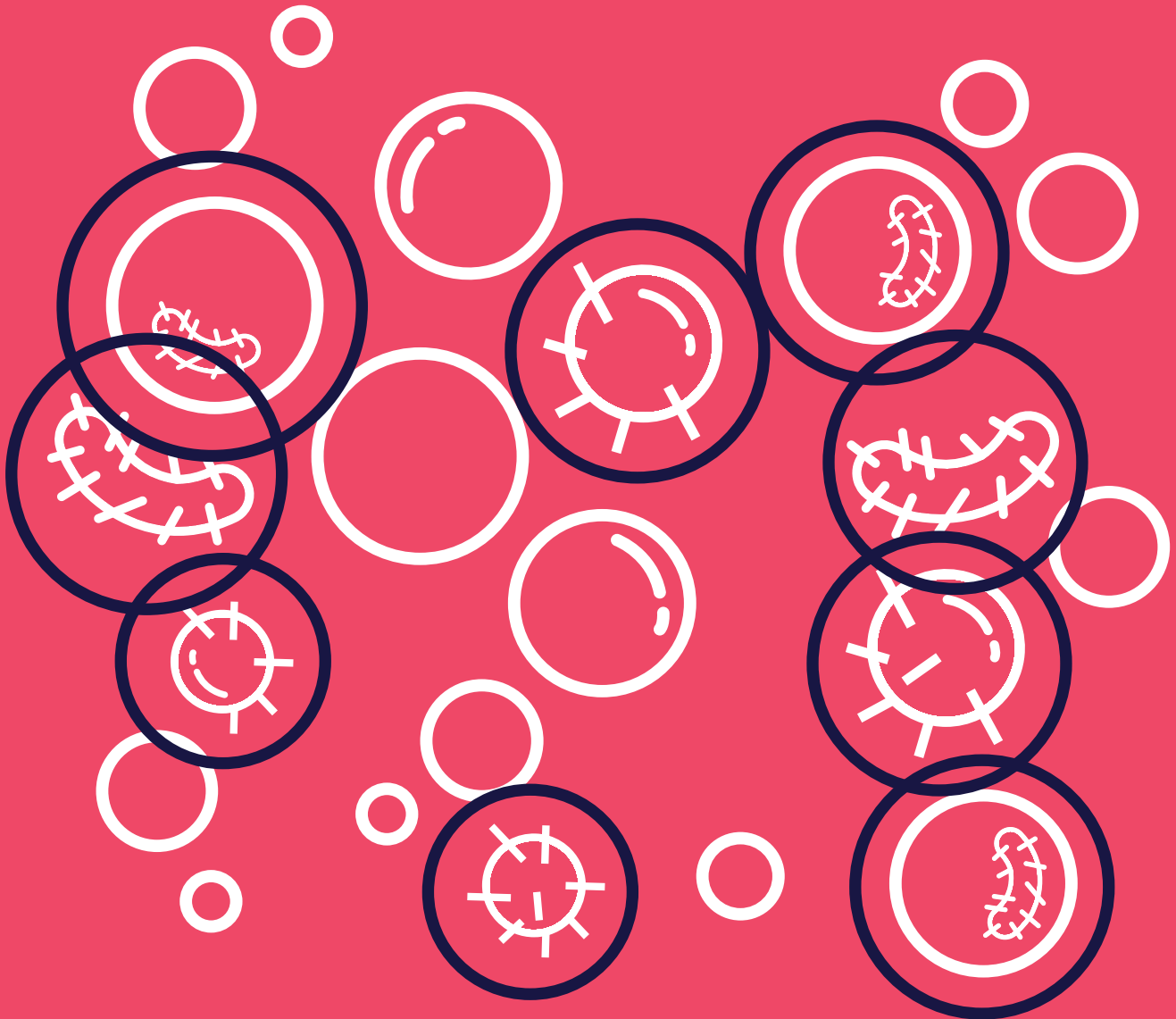


WASH YOUR HANDS FOR 20 SECONDS AND COUNT THE NUMBER OF GERMS



ANSWER KEY

WASH YOUR HANDS FOR 20 SECONDS AND COUNT THE NUMBER OF GERMS



= 9 germs



WASH YOUR HANDS FOR 20 SECONDS AND GUESS THE IMAGE NAMES



=

B

S



=

W



=

R



ANSWER KEY

WASH YOUR HANDS FOR 20 SECONDS AND GUESS THE IMAGE NAMES



=

BUBBLES



=

WASH



=

GERMS



WASH YOUR HANDS FOR 20 SECONDS AND ADD THE GERMS IN EACH ROW

$3 + 1 = \underline{\hspace{2cm}}$
GERMS

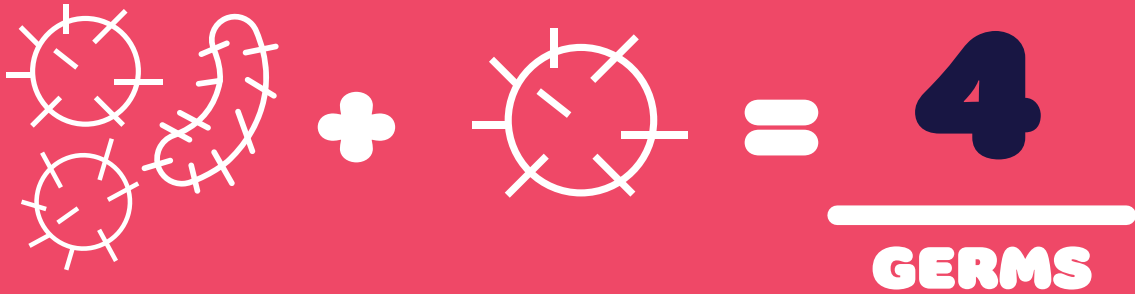
$3 + 3 = \underline{\hspace{2cm}}$
GERMS

$1 + 3 = \underline{\hspace{2cm}}$
GERMS



ANSWER KEY

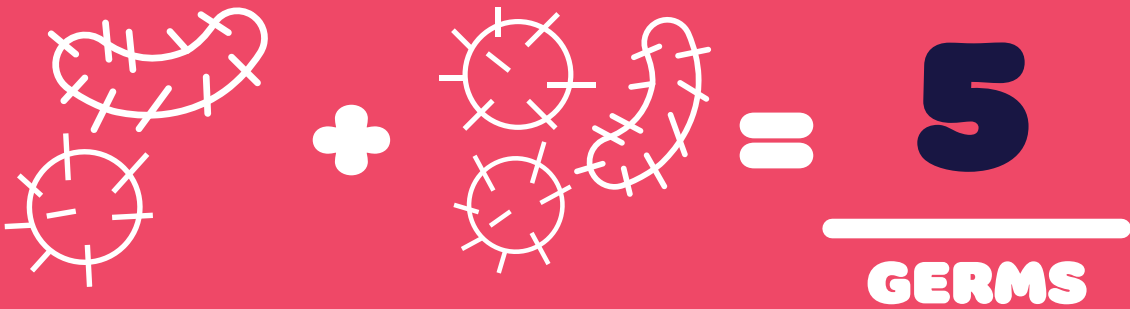
WASH YOUR HANDS FOR 20 SECONDS AND ADD THE GERMS IN EACH ROW



A visual equation showing three germs on the left and one germ on the right, separated by a plus sign. This is followed by an equals sign and the number 4, which is underlined. Below the underline is the word GERMS.

$$3 + 1 = \underline{4}$$

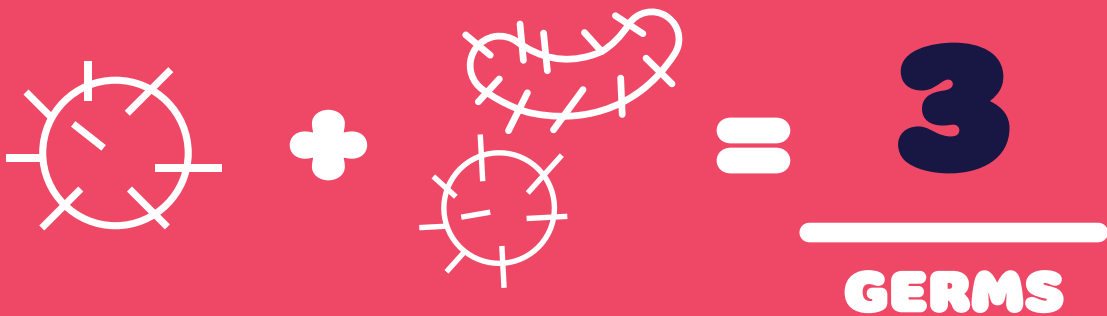
GERMS



A visual equation showing one germ on the left and four germs on the right, separated by a plus sign. This is followed by an equals sign and the number 5, which is underlined. Below the underline is the word GERMS.

$$1 + 4 = \underline{5}$$

GERMS



A visual equation showing one germ on the left and two germs on the right, separated by a plus sign. This is followed by an equals sign and the number 3, which is underlined. Below the underline is the word GERMS.

$$1 + 2 = \underline{3}$$

GERMS



WASH YOUR HANDS FOR 20 SECONDS AND SING THIS SONG

**THE ICKY ICKY TISSUE
IS COVERED IN MY SNOT,
INTO THE TRASH CAN
WITH A LITTLE SHOT.
TIME TO WASH MY HANDS
TO REMOVE ALL THE GERMS.
AND BACK TO THE CLASSROOM,
NOW IT'S TIME TO LEARN.**



WASH YOUR HANDS FOR 20 SECONDS AND REPEAT THIS TONGUE TWISTER

**THE WACKY WASHER WATCHES
WHAT THEY WASH.**

**THEY WATCH THE WATER WASHING
AND WHISKING AWAY THE GERMS.**

**THEY WATCH THE WATER SWISHING
AND WISH FOR TIME TO FLY.**

**THEY WATCH THEIR WATCH OR WATCH
THE CLOCK TO CHECK THEIR
TIME IS RIGHT.**

**TWENTY SECONDS COME SO FAST
THE WASHER IS WISHING A WISH TO
KEEP ON WASHING.**

